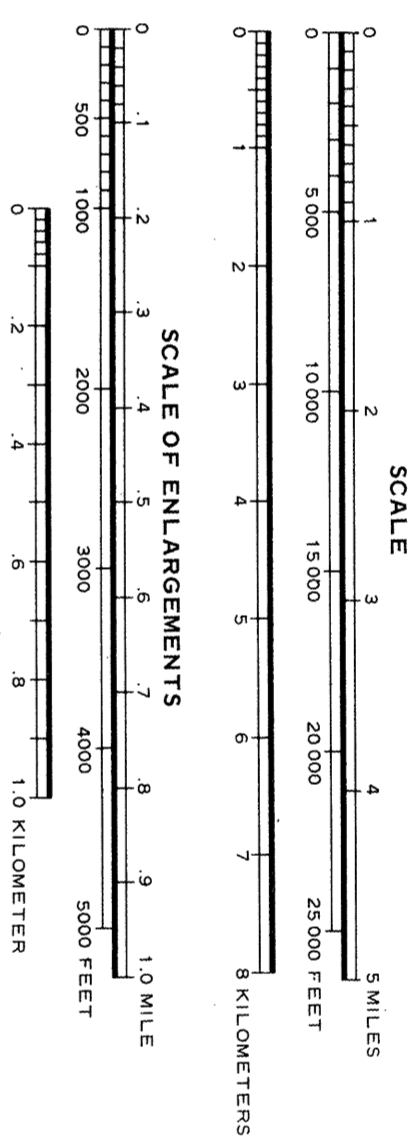
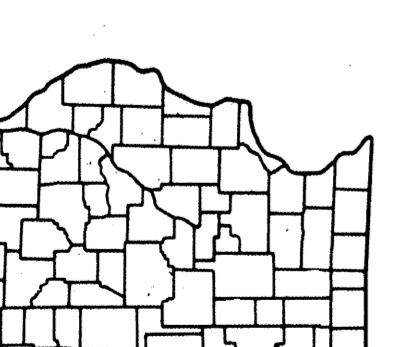
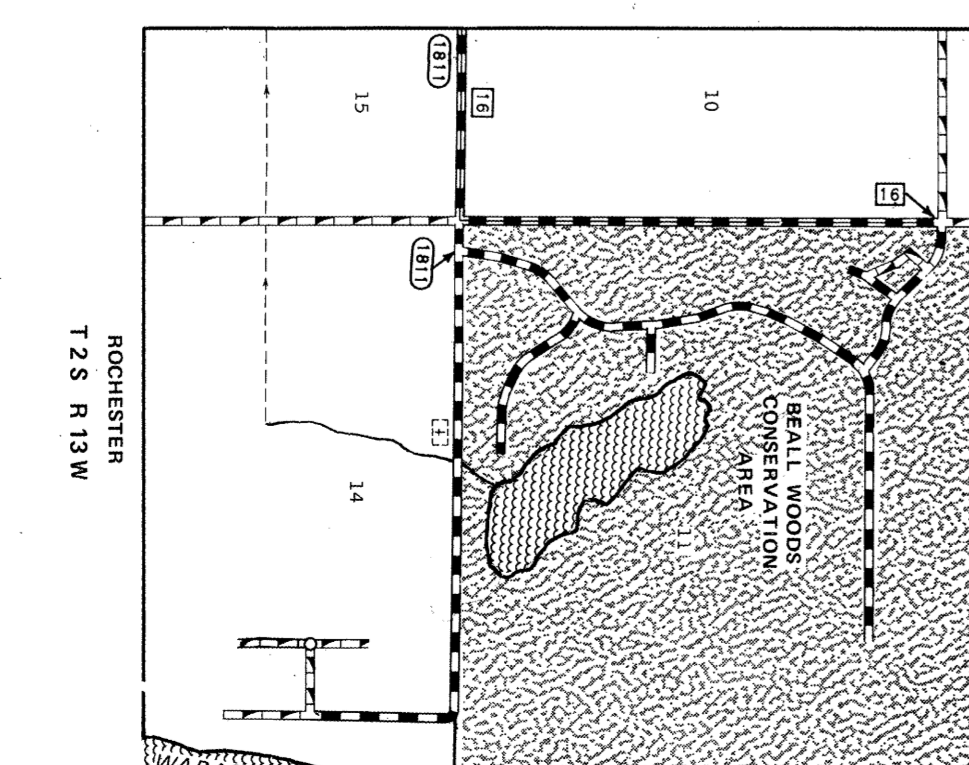
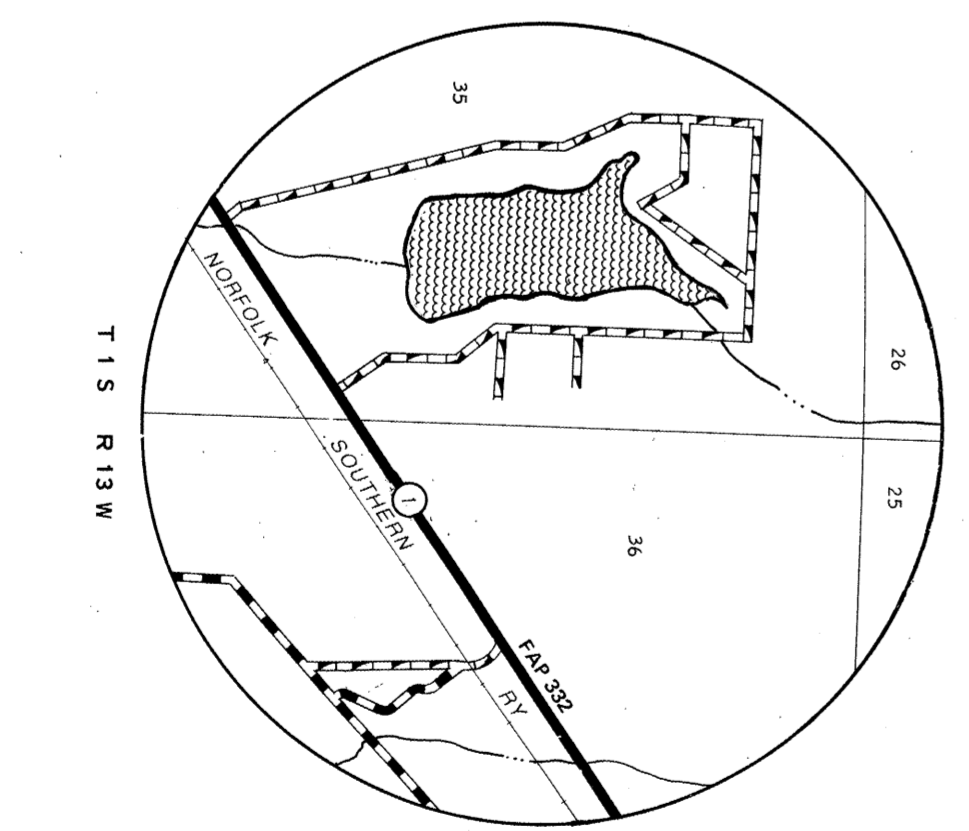
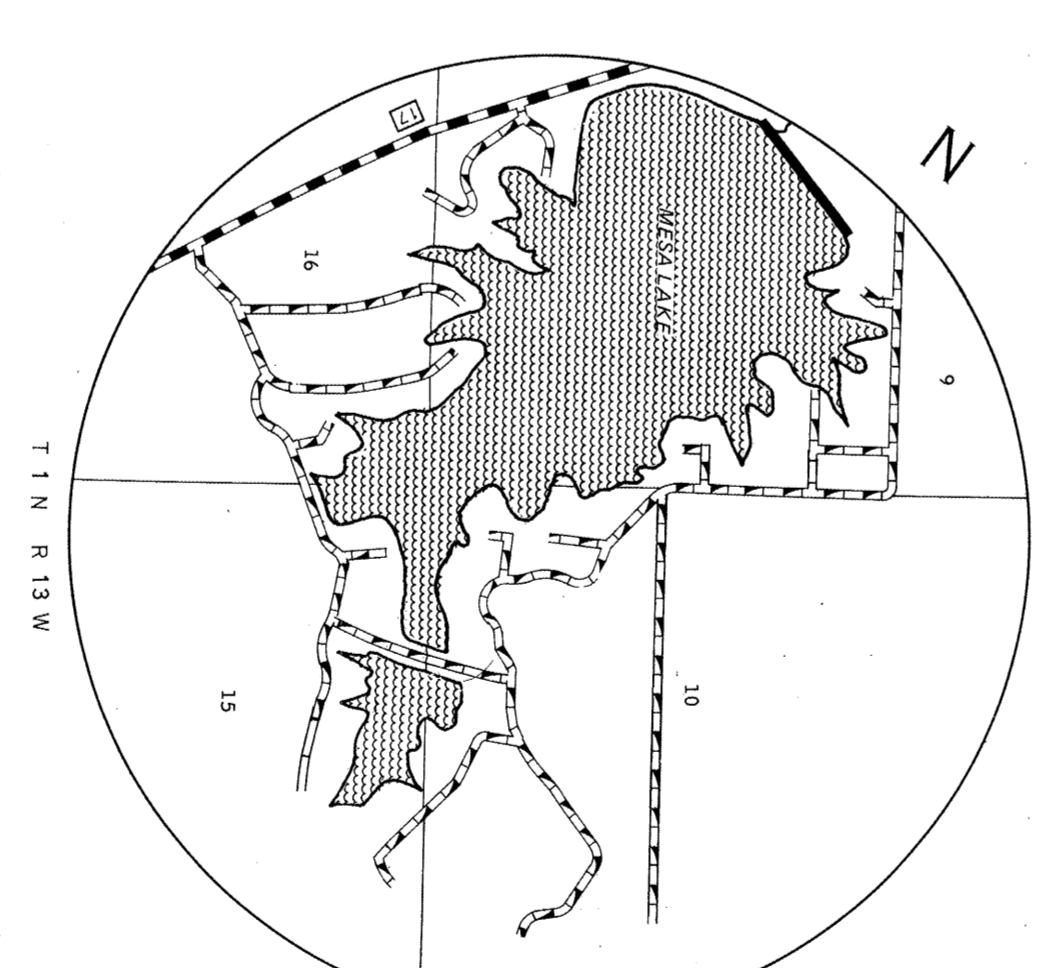
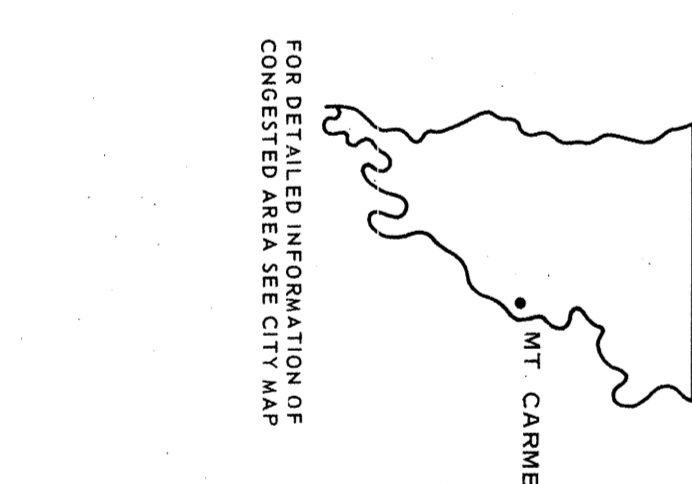
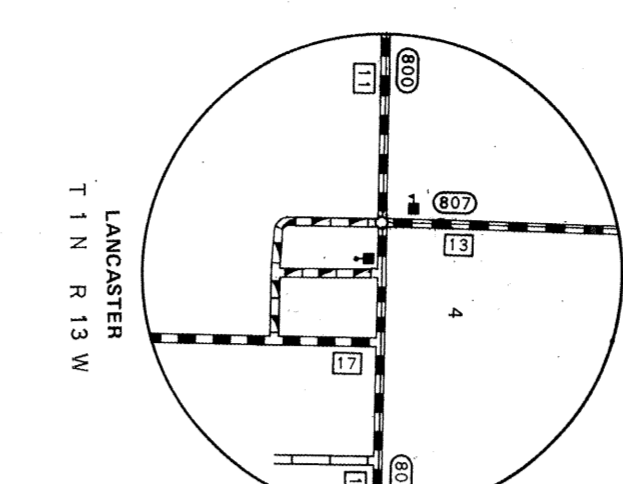
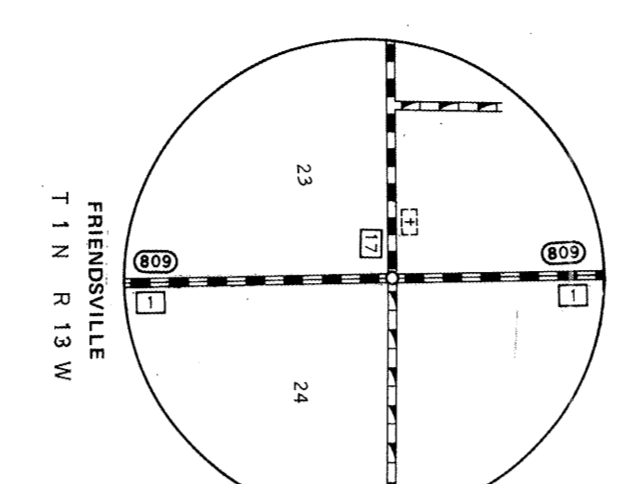
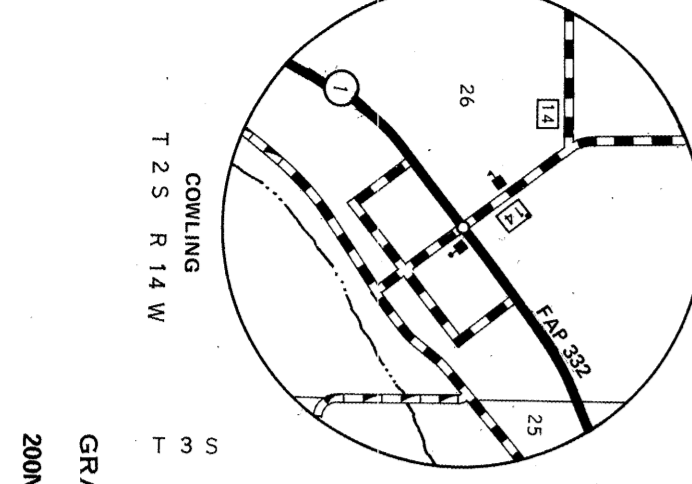
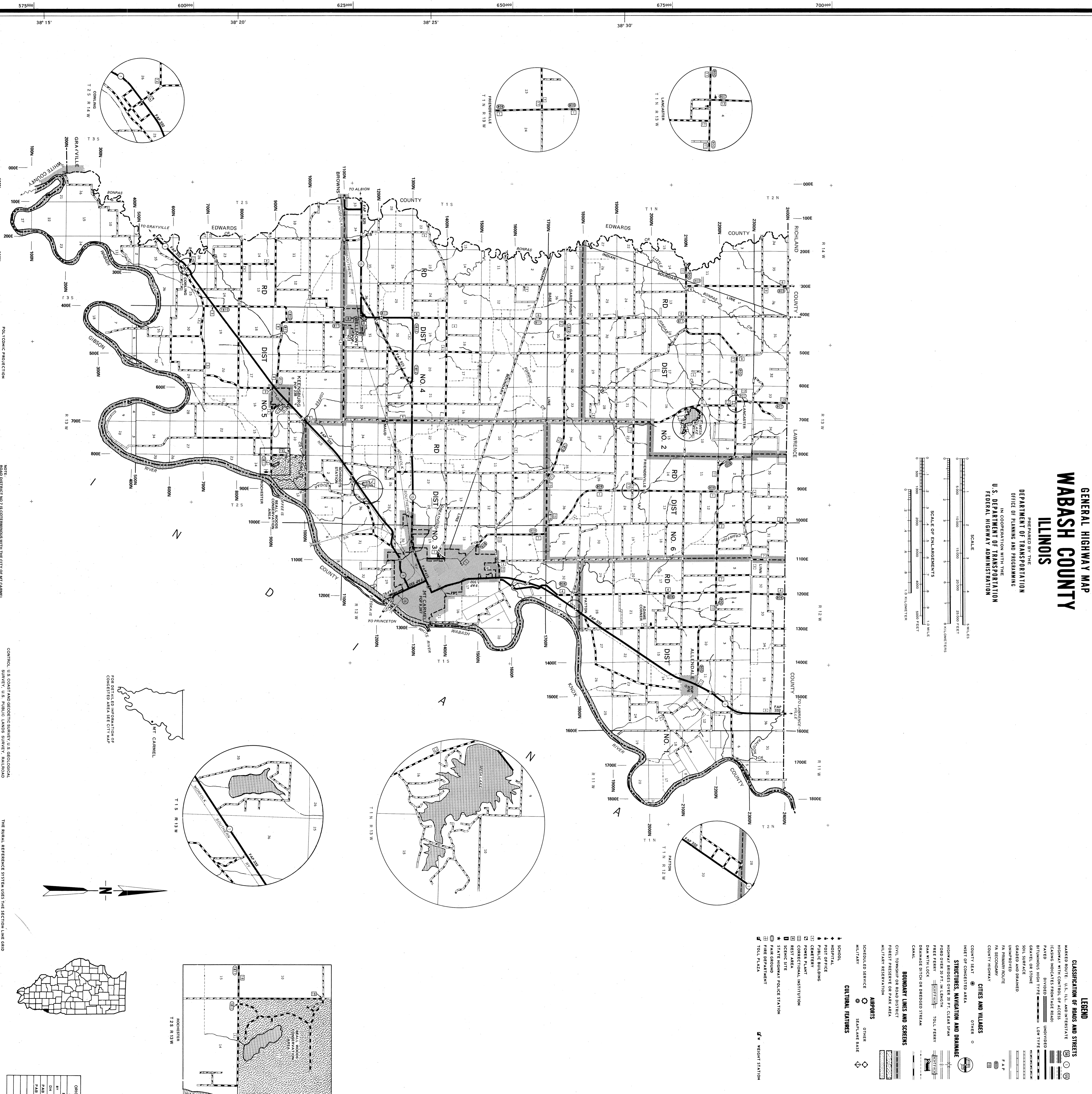


# GENERAL HIGHWAY MAP WARBASH COUNTY ILLINOIS

PREPARED BY THE  
DEPARTMENT OF TRANSPORTATION  
OFFICE OF PLANNING AND PROGRAMMING  
IN COOPERATION WITH THE  
U.S. DEPARTMENT OF TRANSPORTATION  
FEDERAL HIGHWAY ADMINISTRATION



- ### LEGEND
- CLASSIFICATION OF ROADS AND STREETS**
- MARKED ROUTE U.S., ILL. AND INTERSTATE
  - UNMARKED ROUTE U.S., ILL. AND INTERSTATE
  - PAVED AND UNPAVED
  - BITUMINOUS HIGH TYPE
  - GRAVEL OR STONE
  - SOIL SURFACE
  - GRADED AND DRAINED
  - UNIMPROVED
  - PA BRUSH/ROUTE
  - FA SECONDARY
  - COUNTY HIGHWAY
- CITIES AND VILLAGES**
- COUNTY SEAT
  - OTHER
- STRUCTURES, NAVIGATION AND DRAINAGE**
- HIGHWAY BRIDGES OVER 20 FT. CLEAR SPAN
  - ROAD OVER 20 FT. IN LENGTH
  - RAILROAD
  - FERRIS WHEEL
  - RAILROAD
  - DRAINAGE DITCH OR DRENCHED STREAM
  - CANAL
- BOUNDARY LINES AND SCREENS**
- CIVIL TOWNSHIP OR ROAD DISTRICT
  - FOREST PRESERVE OR PARK AREA
  - MILITARY RESERVATION
- AIRPORTS**
- SCHEDULED SERVICE
  - MULTIPLY
  - OTHER
  - SEASIDE DAKE
- CULTURAL FEATURES**
- SCHOOL
  - HOSPITAL
  - POST OFFICE
  - POST OFFICE
  - CEMETERY
  - POWER PLANT
  - CORRELATIONAL INSTITUTION
  - REST AREA
  - SCENIC SITE
  - STATE HIGHWAY POLICE STATION
  - FIRE DEPARTMENT
  - TOLL PLAZA
  - WEIGHT STATION



ORIGINAL DATA	
1894	
1914	
1934	
1954	
1974	
1994	

THE BIRAL REFERENCE SYSTEM USES THE SECTION LINE GRID PROGRESSIVELY NUMBERED NORTH FROM THE COUNTY'S SOUTHERNMOST SECTION LINE AND EAST FROM THE ITS WESTERMOST SECTION LINE.

CONTROL: U.S. COAST AND GEODETIC SURVEY U.S. GEODETIC ALIGNMENTS, AERIAL PHOTOGRAPHS, AND DIVISION OF HIGHWAYS ROAD INVENTORY.

NOTE: DISTRICT NO. 2 IS CONTAINED WITHIN THE CITY OF LAWRENCE, DISTRICT NO. 3 IS CONTAINED WITHIN THE VILLAGE OF SHELBOURN, DISTRICT NO. 4 IS CONTAINED WITHIN THE VILLAGE OF KENSINGTON, DISTRICT NO. 5 IS CONTAINED WITHIN THE VILLAGE OF SHELBOURN, DISTRICT NO. 6 IS CONTAINED WITHIN THE VILLAGE OF SHELBOURN.

POLYCONIC PROJECTION  
25,000 FOOT GRID BASED ON ILLINOIS STATE PLANE COORDINATES (EAST ZONE)

575000 600000 625000 650000 675000 700000

38° 15' 38° 20' 38° 25' 38° 30'

87° 40' 87° 45' 87° 50' 87° 55'

600000 625000 650000 675000 700000

38° 20' 38° 25' 38° 30'

575000 600000 625000 650000 675000 700000

600000 625000 650000 675000 700000

87° 40' 87° 45' 87° 50' 87° 55'

600000 625000 650000 675000 700000

38° 20' 38° 25' 38° 30'

575000 600000 625000 650000 675000 700000

575000 600000 625000 650000 675000 700000

38° 15' 38° 20' 38° 25' 38° 30'

87° 40' 87° 45' 87° 50' 87° 55'

600000 625000 650000 675000 700000

38° 20' 38° 25' 38° 30'

575000 600000 625000 650000 675000 700000

GENERAL HIGHWAY MAP WARBASH COUNTY ILLINOIS