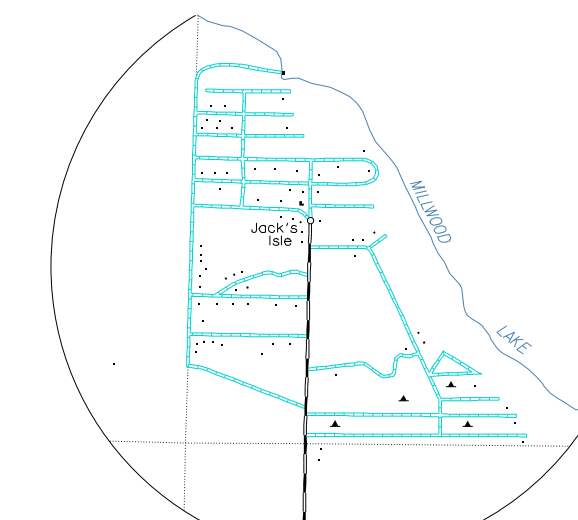
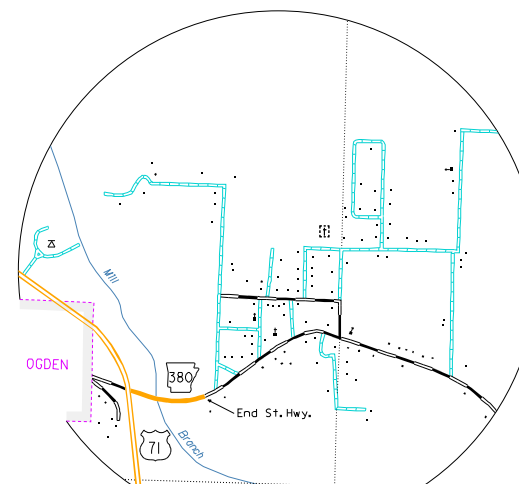
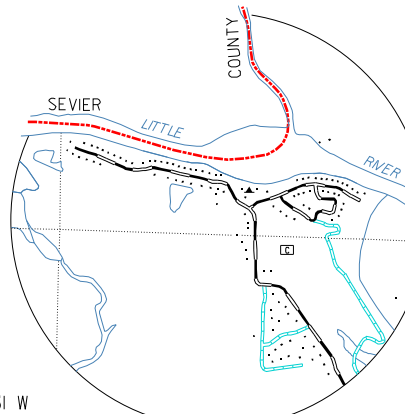
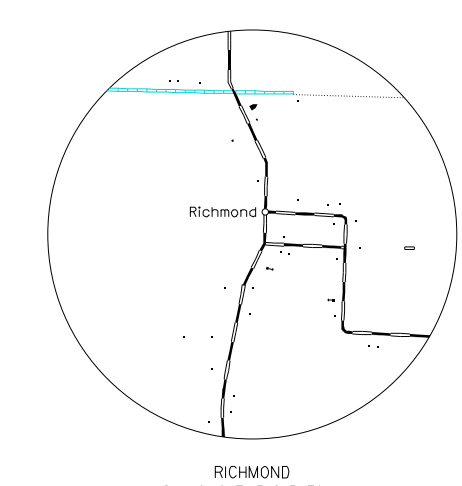
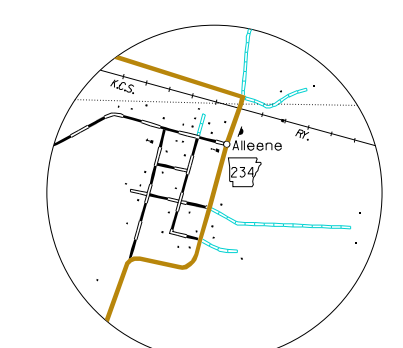
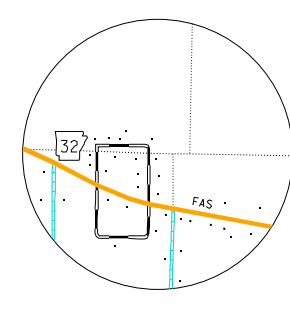
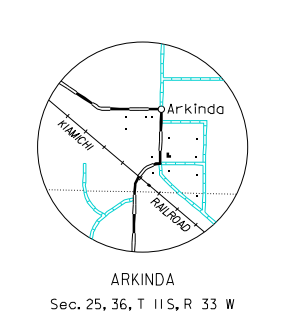
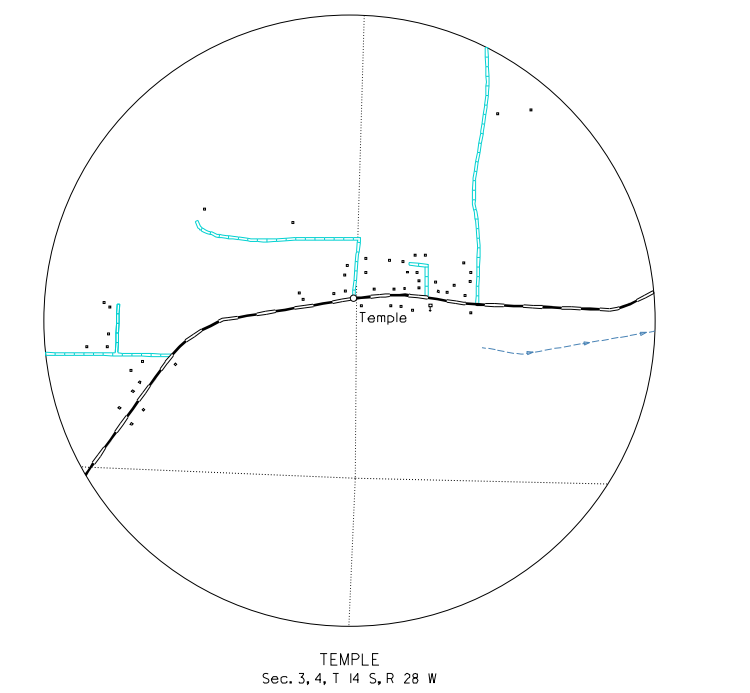
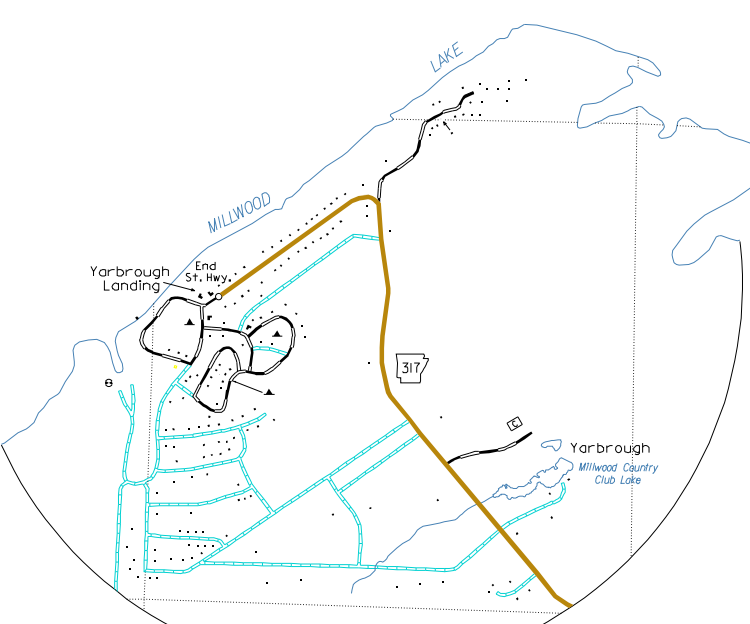


- LEGEND**
- STATE BOUNDARY
 - COUNTY BOUNDARY
 - STATE OR COUNTY LINE INDETERMINATE
 - U.S. LAND TOWNSHIP LINE
 - SECTION LINE
 - NATIONAL FOREST BOUNDARY
 - PARK OR RESERVATION BOUNDARY
 - PAVED STATE OR U.S. HIGHWAY
 - PROJECTED ROAD
 - DIVIDED HIGHWAY
 - U.S. NUMBERED HIGHWAY
 - STATE HIGHWAY
 - PAVED LOCAL ROAD
 - GRAVEL LOCAL ROAD
 - GRADED & DRAINED LOCAL ROAD
 - UNIMPROVED LOCAL ROAD
 - RAILROAD - 1/2 MILE OR MORE USED BY
 - RAILROAD STATION
 - GRADE CROSSING
 - OVERPASS
 - UNDERPASS
 - HIGHWAY BRIDGE - ON FEET OR MORE IN LENGTH
 - MILEAGE BETWEEN POINTS
 - LEVEE OR DIKE
 - LAKE, RESERVOIR OR POND
 - MARSH OR SWAMP
 - RIDE RIVER OR STREAM
 - DOCK, PIER OR LANDING
 - INTERMITTENT NAVIGATION
 - HEAD OF NAVIGATION - (SEE DEPARTMENT REGULATION)
 - SMALL STREAM
 - DRAINAGE DITCH
 - CORPORATE LIMITS AND ROADS THROUGH TOWN
 - COUNTY SEAT
 - OTHER CITIES AND TOWNS
 - BOUNDARY OF MINING AREA
 - PRIVATE AIRFIELD
 - FARM UNIT OR DWELLING
 - GROUP OF CLOSELY SPACED DWELLINGS - (SEE FIGURE SYMBOL)
 - CHURCH OR OTHER RELIGIOUS INSTITUTION
 - SCHOOL
 - POST OFFICE - POST OFFICE AND BUSINESS
 - CEMETERY
 - CHURCH WITH CEMETERY ADJACENT
 - BUSINESS ESTABLISHMENT
 - FACTORY OR INDUSTRIAL PLANT - COTTON GIN
 - SAWMILL
 - GRAVEL PIT
 - TOWN OR COMMUNITY HALL
 - RADIO OR TELEVISION STATION AND CALL LETTERS
 - WEIGHT AND PERMIT STATION
 - DRIVE-IN THEATER
 - CALDING OR PUMPING STATION
 - POWER SUBSTATION
 - TRAILER PARK
 - PUMPING STATION, OIL OR GAS
 - USE AREA
 - OBSERVATION OR LOOKOUT TOWER
 - CAMP OR LODGE
 - SMALL PARK - (SEE STATE OF ARKANSAS MAP SYMBOL)
 - WATER SUPPLY STANDPIPE OR TANK
 - AUTO SALVAGE YARD
 - CHICKEN HOUSE OR OTHER LIVESTOCK



GENERAL HIGHWAY MAP
LITTLE RIVER COUNTY
ARKANSAS

PREPARED BY
ARKANSAS STATE HIGHWAY AND TRANSPORTATION DEPARTMENT
PLANNING AND RESEARCH DIVISION
IN COOPERATION WITH
U.S. DEPARTMENT OF TRANSPORTATION
FEDERAL HIGHWAY ADMINISTRATION
SCALE 662500



Copies of this map are available
at a nominal fee from the
Arkansas State Highway and
Transportation Department,
P.O. Box 226 Little Rock, Ark. 72203



NOTE: Enlargements of all congested areas are five times
map scale unless otherwise noted.
Individual maps are available for all active incorporated cities.
Area: 361 Square Miles
Population: 13,628 - 2000 Census
Map Issued: 6-27-99. Replaces map issued 11-8-91
Field Inventory: 1975

Map revisions made from aerial photographs taken 12-96
Map compilation completed 3-98
County map produced using Computer Assisted Cartography.
Map Revised: 12-08-05, S.A. 32, Sections 2, 27, 3, 38.

Procyonic Projection-North American Datum