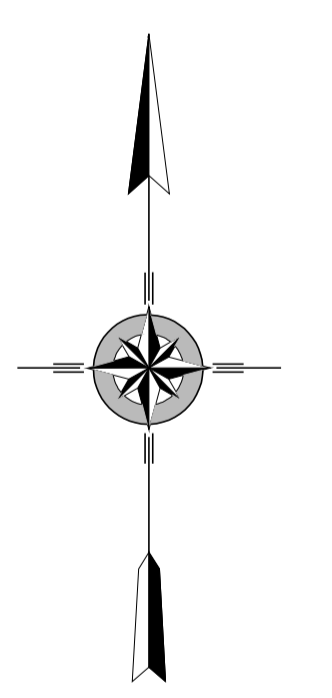
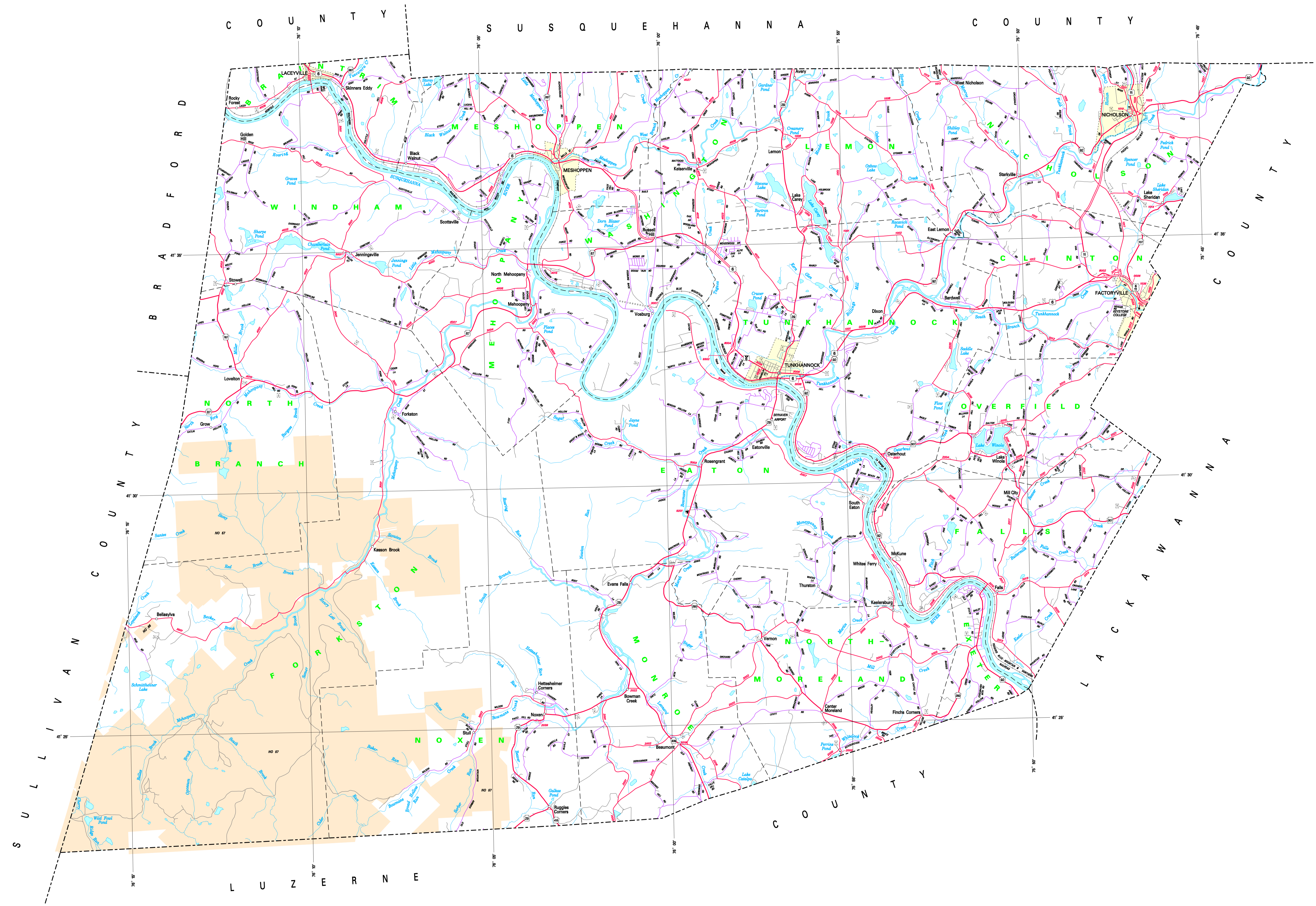


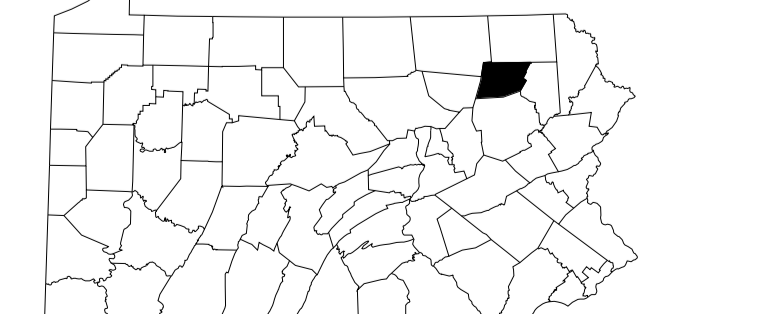
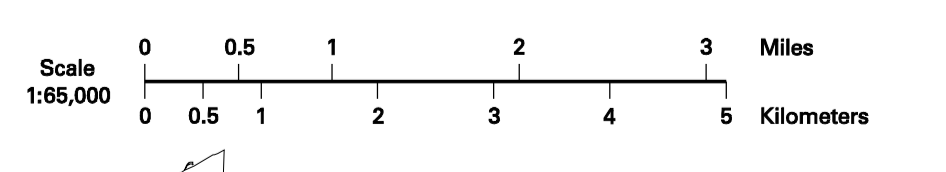
LEGEND

FULLY CONTROLLED ACCESS HIGHWAY	—————
MULTILANE HIGHWAY	—————
TRUNK ROUTE	—————
ROADWAY WITH ROAD AND EARTHWORK	—————
STATE MAINTAINED BRIDGE	—————
TOWNSHIP ROAD	—————
TOWNSHIP ROAD (PAVED OR IMPROVED)	—————
OTHER ROAD	—————
INTERSTATE INTERCHANGE NUMBER	①
INTERSTATE TRAFFIC ROUTE	②
UNITED STATES TRAFFIC ROUTE	③
PENNSYLVANIA TRAFFIC ROUTE	④
RAILROAD BY SERVICE	⑤
RAILROAD ABANDONED (TRACK RETAINED)	⑥
STATE LINE	⑦
COUNTY LINE	⑧
TOWNSHIP LINE	⑨
INCORPORATED CITY	⑩
INCORPORATED BOROUGHS	⑪
STATE CAPITAL	⑫
COUNTY SEAT	⑬
OTHER COMMUNITIES	⑭
COLLEGE OR UNIVERSITY	⑮
STATE POLICE FACILITY	⑯
CHURCH	⑰
STATE ADMINISTERED HISTORIC PROPERTY	⑱
FEDERAL STATE HISTORIC SITE	⑲
PAWDOCK FACILITY	⑳
POINTS OF INTEREST	㉑
HOV 3+ ROAD	㉒
HELIPORT	㉓
REST AREA AND COMFORT FACILITY	㉔
WELCOME CENTER AND COMFORT FACILITY	㉕
STATE FIRE HISTORY	㉖
STATE CREEK WADING AREA	㉗
STATE FOREST POND AREA	㉘
FEDERAL RECREATION SITE	㉙
STATE PARK LAND / HEADQUARTERS	㉚
STATE GAME LAND AND NUMBER	㉛
STATE AND FEDERAL FOREST LAND	㉜
FEDERAL PARK / RECREATION LAND	㉝
FEDERAL RESERVATION	㉞



2011
GENERAL HIGHWAY MAP
WYOMING COUNTY
PENNSYLVANIA

PREPARED BY THE
PENNSYLVANIA DEPARTMENT OF TRANSPORTATION
BUREAU OF PLANNING AND RESEARCH
GEOGRAPHIC INFORMATION DIVISION
IN COOPERATION WITH THE
U.S. DEPARTMENT OF TRANSPORTATION
FEDERAL HIGHWAY ADMINISTRATION



POPULATION OF COUNTY 2010 Census 28,276
AREA OF COUNTY (SQ. MI.) 1,046
POLYCONIC PROJECTION - NAD 83 DATUM

COPIES OF THIS MAP ARE AVAILABLE AT NOMINAL COST
CONTACT:
PENNSYLVANIA DEPARTMENT OF TRANSPORTATION
SALES STATION
P.O. BOX 3028
HARRISBURG, PENNSYLVANIA 17105 - 2028
TELEPHONE: (717) 767-4244

USERS NOTING ERRORS OR OMISSIONS ON THIS MAP
ARE URGED TO REPORT THEM TO:
PENNSYLVANIA DEPARTMENT OF TRANSPORTATION
BUREAU OF PLANNING & RESEARCH
GEOGRAPHIC INFORMATION DIVISION
P.O. BOX 3028
HARRISBURG, PENNSYLVANIA 17105 - 2028
E-MAIL: rs-gisinfo@dotdps.pa.us

COPYRIGHT © COMMONWEALTH OF PENNSYLVANIA
ALL RIGHTS RESERVED