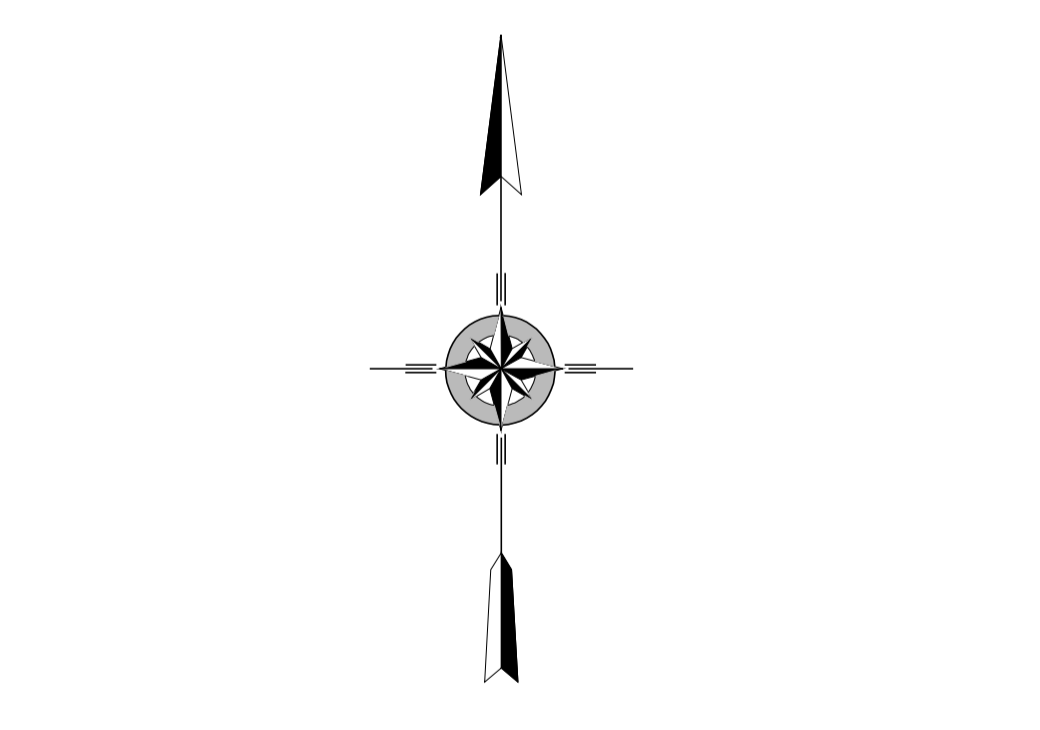
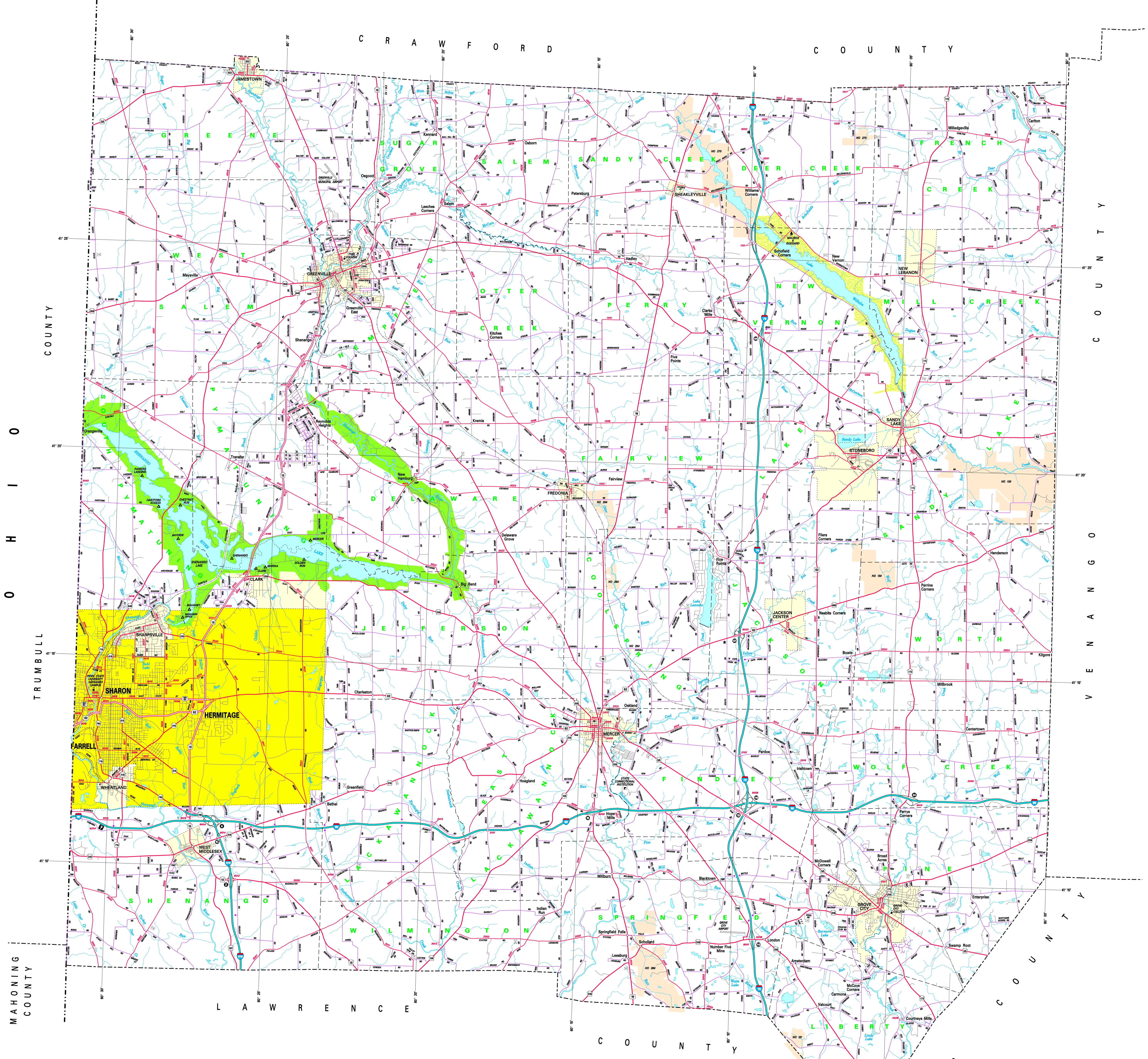


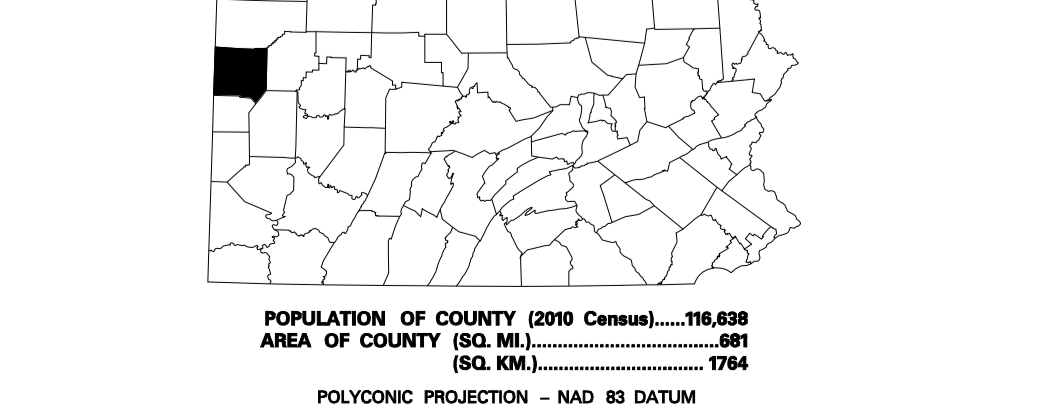
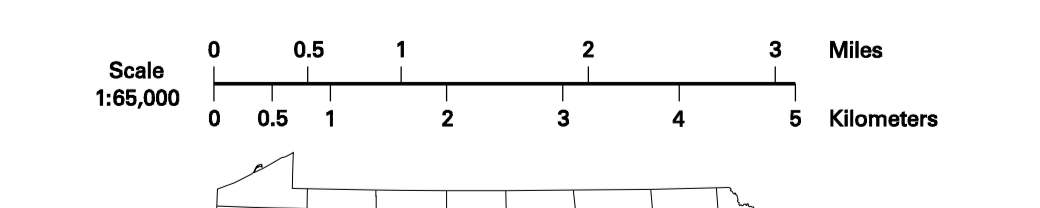
**LEGEND**

FULLY CONTROLLED ACCESS HIGHWAY	
MULTILANE HIGHWAY	
TRUNK ROUTE	
ROADWAY WITH ROAD AND EASEMENTS	
STATE MAINTAINED BRIDGE	
TOWNSHIP ROAD	
TOWNSHIP ROAD (PAVED UNPAVED)	
OTHER ROAD	
INTERSTATE INTERCHANGE NUMBER	
UNITS STATES TRUNK ROUTE	
PENNSYLVANIA TRUNK ROUTE	
RAILROAD BY SERVICE	
RAILROAD ABANDONED (TRACK RETAINED)	
STATE LINE	
COUNTY LINE	
TOWNSHIP LINE	
INCORPORATED CITY	
INCORPORATED BOROUGH	
STATE CAPITAL	
COUNTY SEAT	
OTHER COMMUNITIES	
CITY OR UNIVERSITY	
STATE POLICE FACILITY	
OTHER	
STATE ADMINISTERED HISTORIC PROPERTY	
FEDERAL STATE HISTORIC	
PANHANDLE FACILITY	
POINTS OF INTEREST	
HOME AND TRAIL	
HELIPORT	
REST AREA AND COMFORT FACILITY	
WELCOME CENTER AND COMFORT FACILITY	
STATE FISH HATCHERY	
STATE FOREST NURSERY AND	
STATE FOREST POND AREA	
FEDERAL RECREATION SITE	
STATE PARK LAND (HEADQUARTERS)	
STATE GAME LAND AND NUMBER	
STATE AND FEDERAL FOREST LAND	
FEDERAL PARK / RECREATION LAND	
FEDERAL RESERVATION	



2011  
GENERAL HIGHWAY MAP  
**MERCER COUNTY**  
PENNSYLVANIA

PREPARED BY THE  
PENNSYLVANIA DEPARTMENT OF TRANSPORTATION  
BUREAU OF PLANNING & RESEARCH  
GEOGRAPHIC INFORMATION DIVISION  
IN COOPERATION WITH THE  
U.S. DEPARTMENT OF TRANSPORTATION  
FEDERAL HIGHWAY ADMINISTRATION



COPIES OF THIS MAP ARE AVAILABLE AT NOMINAL COST  
CONTACT:  
PENNSYLVANIA DEPARTMENT OF TRANSPORTATION  
SALES STORE  
HARRISBURG, PENNSYLVANIA 17105 - 2028  
TELEPHONE: (717) 797-8246

USERS NOTING ERRORS OR OMISSIONS ON THIS MAP  
ARE URGED TO REPORT THEM TO:  
PENNSYLVANIA DEPARTMENT OF TRANSPORTATION  
BUREAU OF PLANNING & RESEARCH  
GEOGRAPHIC INFORMATION DIVISION  
P.O. BOX 3888  
HARRISBURG, PENNSYLVANIA 17105 - 3888  
E-MAIL: [pa-penninfo@state.pa.us](mailto:pa-penninfo@state.pa.us)

COPYRIGHT © COMMONWEALTH OF PENNSYLVANIA  
ALL RIGHTS RESERVED