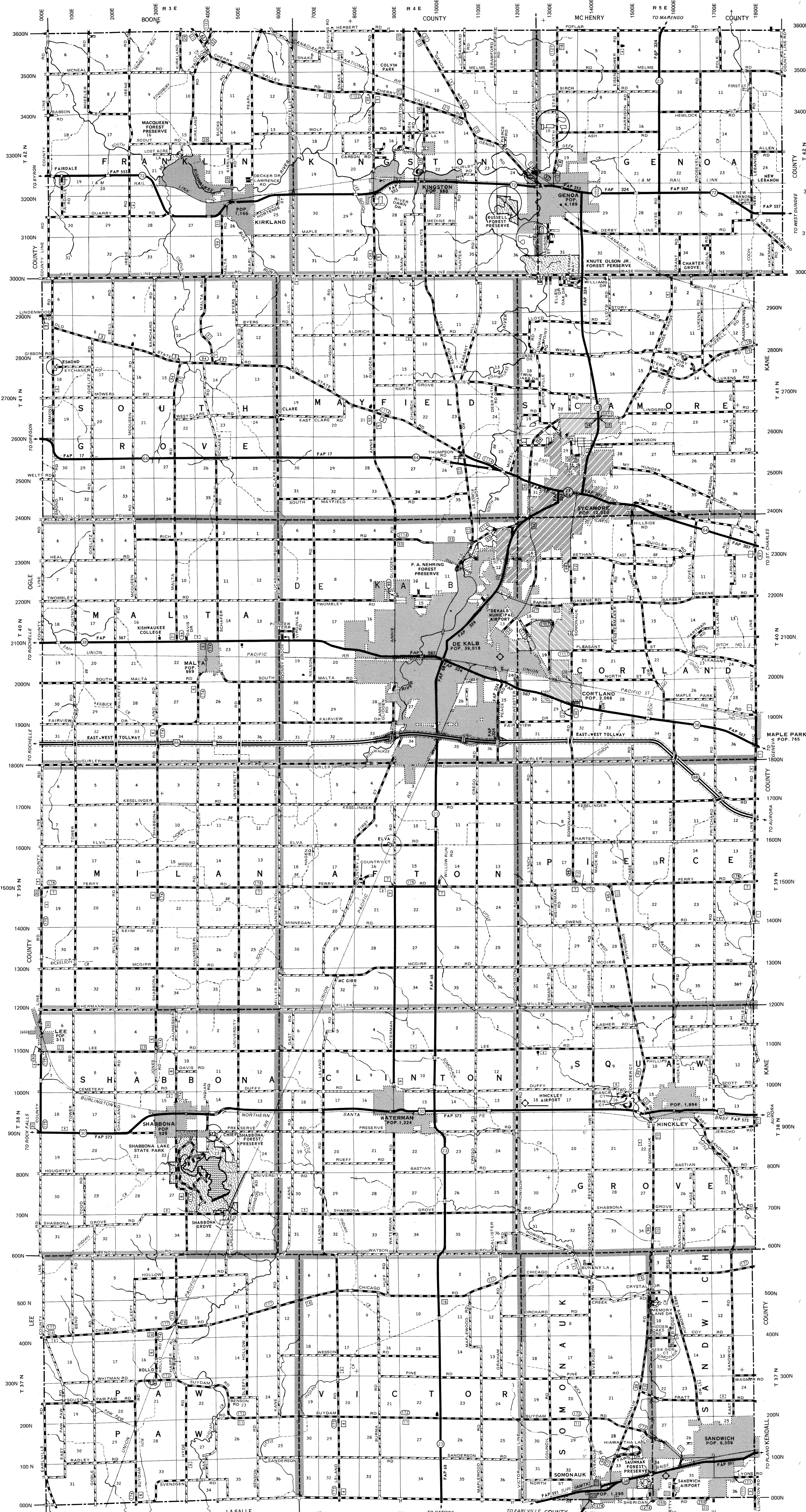
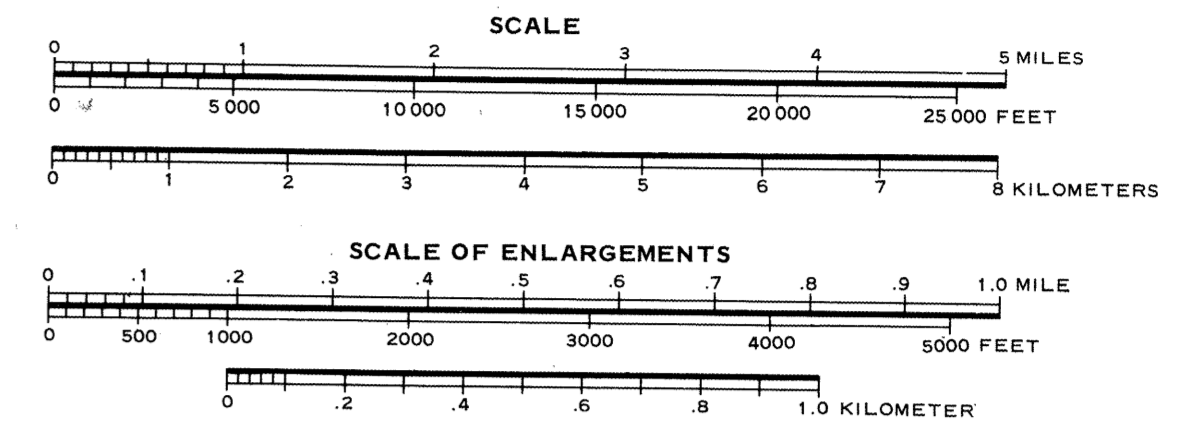
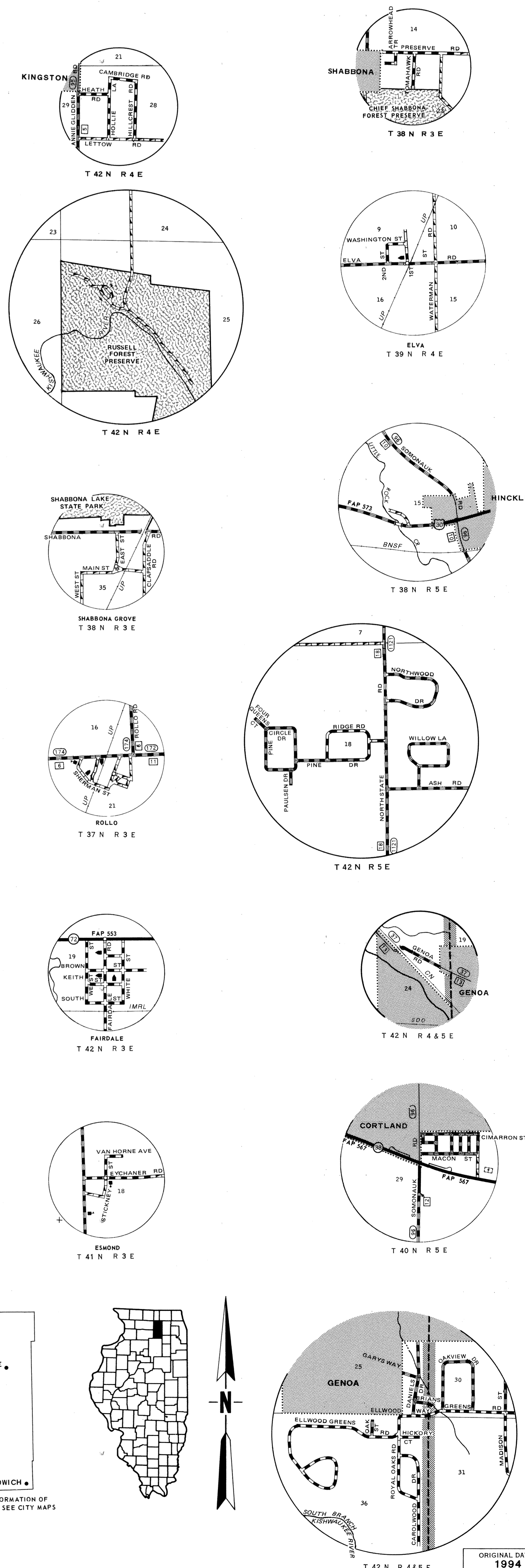


GENERAL HIGHWAY MAP DE KALB COUNTY ILLINOIS

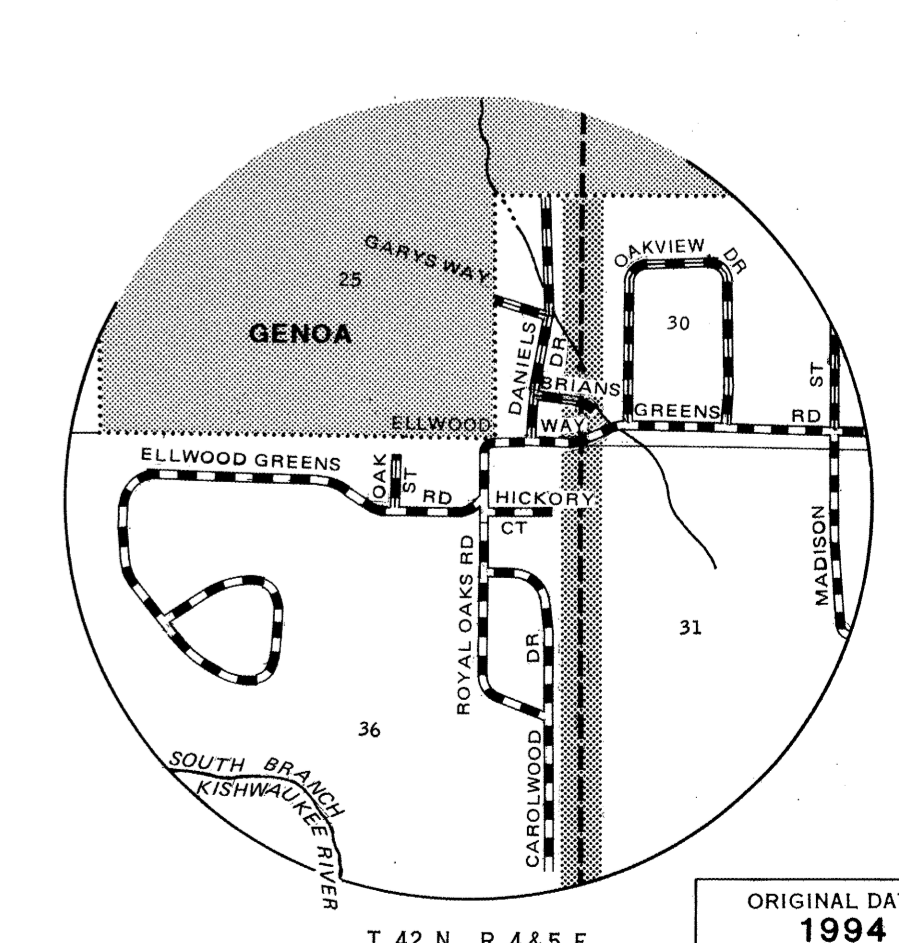
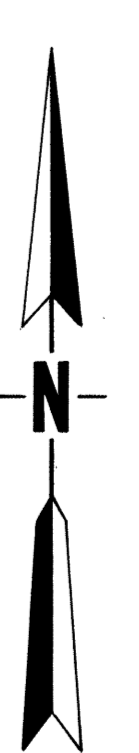
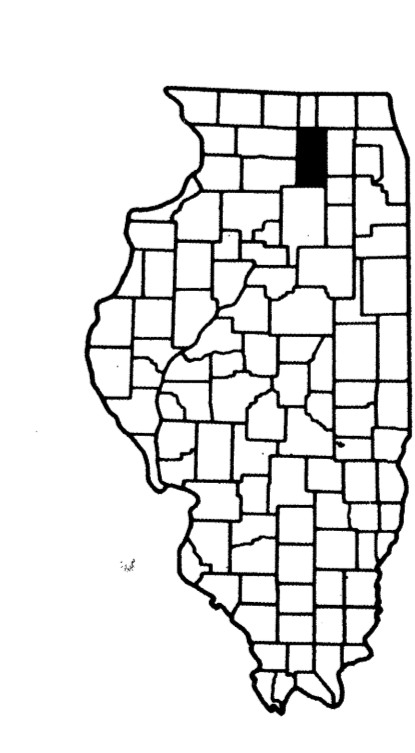
PREPARED BY THE
DEPARTMENT OF TRANSPORTATION
OFFICE OF PLANNING AND PROGRAMMING
IN COOPERATION WITH THE
U.S. DEPARTMENT OF TRANSPORTATION
FEDERAL HIGHWAY ADMINISTRATION



- LEGEND**
- CLASSIFICATION OF ROADS AND STREETS**
- MARKED ROUTE: U.S., ILL. AND INTERSTATE HIGHWAY WITH CONTROL OF ACCESS
 - CASING INDICATES FRONTAGE ROAD
 - PAYED DIVIDED UNDIVIDED
 - BITUMINOUS HIGH TYPE LOW TYPE
 - GRAVEL OR STONE
 - SOIL SURFACE
 - GRADED AND DRAINED
 - UNIMPROVED
 - FA PRIMARY ROUTE
 - FA SECONDARY
 - COUNTY HIGHWAY
- CITIES AND VILLAGES**
- COUNTY SEAT
 - OTHER
 - INSET OF CONGESTED AREA
- STRUCTURES, NAVIGATION AND DRAINAGE**
- HIGHWAY BRIDGES OVER 20 FT. CLEAR SPAN
 - FORD OVER 20 FT. IN LENGTH
 - FREE FERRY
 - TOLL FERRY
 - DAM WITH LOCK
 - DRAINAGE DITCH OR DREGGED STREAM
 - CANAL
- BOUNDARY LINES AND SCREENS**
- CIVIL TOWNSHIP OR ROAD DISTRICT
 - FOREST PRESERVE OR PARK AREA
 - MILITARY RESERVATION
- AIRPORTS**
- SCHEDULED SERVICE
 - MILITARY
 - OTHER
 - SEAPLANE BASE
- CULTURAL FEATURES**
- SCHOOL
 - HOSPITAL
 - POST OFFICE
 - PUBLIC BUILDING
 - CEMETERY
 - POWER PLANT
 - CORRECTIONAL INSTITUTION
 - REST AREA
 - SCENIC SITE
 - STATE HIGHWAY POLICE STATION
 - FAIR GROUND
 - FIRE DEPARTMENT
 - TOLL PLAZA
 - WEIGHT STATION



SYCAMORE
DE KALB
SANDWICH
FOR DETAILED INFORMATION OF
CONGESTED AREAS SEE CITY MAPS



BY	DATE
TR	12-31-95
MJM	12-31-98
MJM	12-31-97
MJM	12-31-98
MJM	12-31-99
MJM	12-31-99

POLYCONIC PROJECTION
25,000 FOOT GRID BASED ON ILLINOIS
STATE PLANE COORDINATES (EAST ZONE)
POPULATION AS 1990 CENSUS
TOTAL AREA 850 SQUARE MILES

THE RURAL REFERENCE SYSTEM USES THE SECTION LINE GRID
PROGRESSIVELY NUMBERED NORTH FROM THE COUNTY'S SOUTHERNMOST
SECTION LINE AND EAST FROM ITS WESTERMOST SECTION LINE.