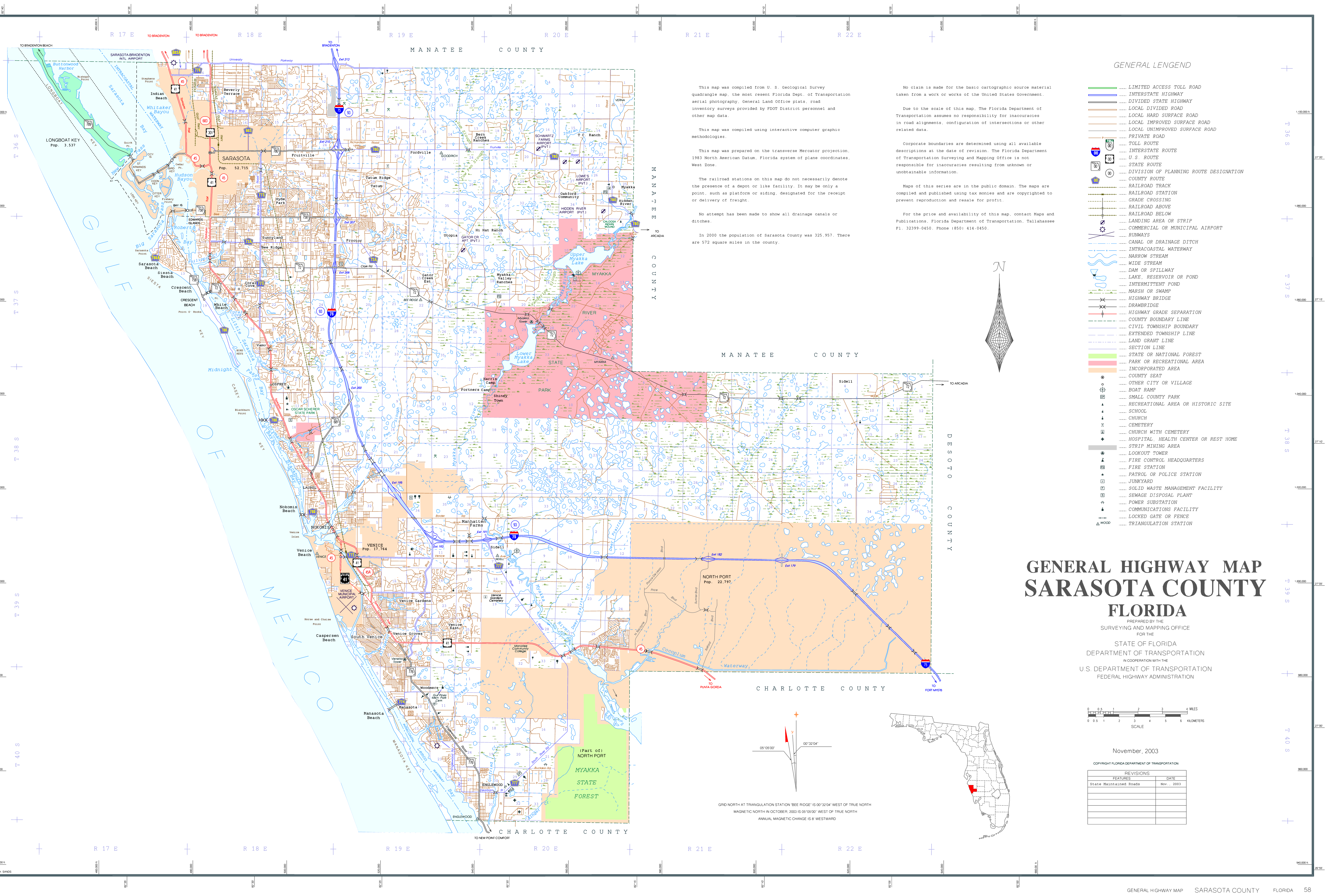


MANATEE COUNTY



This map was compiled from U. S. Geological Survey quadrangle map, the most recent Florida Dept. of Transportation aerial photography, General Land Office plats, road inventory surveys provided by FDOT District personnel and other map data.

This map was compiled using interactive computer graphic methodologies.

This map was prepared on the transverse Mercator projection, 1983 North American Datum, Florida system of plane coordinates, West Zone.

The railroad stations on this map do not necessarily denote the presence of a depot or like facility. It may be only a point, such as platform or siding, designated for the receipt or delivery of freight.

No attempt has been made to show all drainage canals or ditches.

In 2000 the population of Sarasota County was 325,957. There are 572 square miles in the county.

No claim is made for the basic cartographic source material taken from a work or works of the United States Government.

Due to the scale of this map, the Florida Department of Transportation assumes no responsibility for inaccuracies in road alignments, configuration of intersections or other related data.

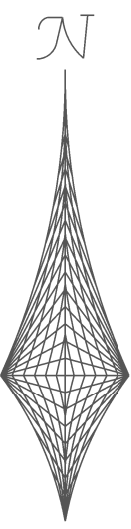
Corporate boundaries are determined using all available descriptions at the date of revision. The Florida Department of Transportation Surveying and Mapping Office is not responsible for inaccuracies resulting from unknown or unobtainable information.

Maps of this series are in the public domain. The maps are compiled and published using tax monies and are copyrighted to prevent reproduction and resale for profit.

For the price and availability of this map, contact Maps and Publications, Florida Department of Transportation, Tallahassee FL 32399-0450. Phone (850) 414-0450.

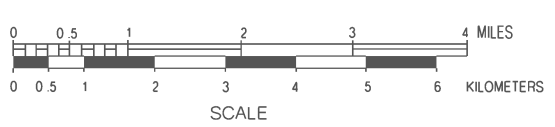
GENERAL LENDEND

- LIMITED ACCESS TOLL ROAD
INTERSTATE HIGHWAY
DIVIDED STATE HIGHWAY
LOCAL DIVIDED ROAD
LOCAL HARD SURFACE ROAD
LOCAL IMPROVED SURFACE ROAD
LOCAL UNIMPROVED SURFACE ROAD
PRIVATE ROAD
TOLL ROUTE
INTERSTATE ROUTE
U. S. ROUTE
STATE ROUTE
DIVISION OF PLANNING ROUTE DESIGNATION
COUNTY ROUTE
RAILROAD TRACK
RAILROAD STATION
RAILROAD CROSSING
RAILROAD ABOVE
RAILROAD BELOW
LANDING AREA OR STRIP
COMMERCIAL OR MUNICIPAL AIRPORT
RUNWAYS
CANAL OR DRAINAGE DITCH
INTRACOASTAL WATERWAY
NARROW STREAM
WIDE STREAM
DAM OR SPILLWAY
LAKE, RESERVOIR OR POND
INTERMITTENT POND
MARSH OR SWAMP
HIGHWAY BRIDGE
DRAWBRIDGE
HIGHWAY GRADE SEPARATION
COUNTY BOUNDARY LINE
CIVIL TOWNSHIP BOUNDARY
EXTENDED TOWNSHIP LINE
LAND GRANT LINE
SECTION LINE
STATE OR NATIONAL FOREST
PARK OR RECREATIONAL AREA
INCORPORATED AREA
COUNTY SEAT
OTHER CITY OR VILLAGE
BOAT RAMP
SMALL COUNTY PARK
RECREATIONAL AREA OR HISTORIC SITE
SCHOOL
CHURCH
CEMETERY
CHURCH WITH CEMETERY
HOSPITAL, HEALTH CENTER OR REST HOME
STRIP MINING AREA
LOOKOUT TOWER
FIRE CONTROL HEADQUARTERS
FIRE STATION
PATROL OR POLICE STATION
JUNKYARD
SOLID WASTE MANAGEMENT FACILITY
SEWAGE DISPOSAL PLANT
POWER SUBSTATION
COMMUNICATIONS FACILITY
LOCKED GATE OR FENCE
TRIANGULATION STATION



GENERAL HIGHWAY MAP
SARASOTA COUNTY
FLORIDA

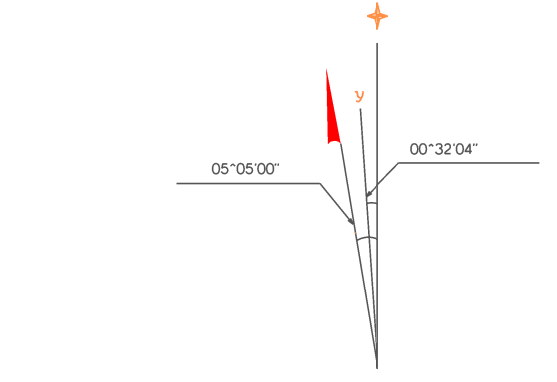
PREPARED BY THE SURVEYING AND MAPPING OFFICE FOR THE STATE OF FLORIDA DEPARTMENT OF TRANSPORTATION IN COOPERATION WITH THE U.S. DEPARTMENT OF TRANSPORTATION FEDERAL HIGHWAY ADMINISTRATION



November, 2003

COPYRIGHT FLORIDA DEPARTMENT OF TRANSPORTATION

Table with columns: REVISIONS, FEATURES, DATE. Row 1: State Maintained Roads, Nov., 2003.



GRID NORTH AT TRIANGULATION STATION 'BEE RIDGE' IS 00°32'04" WEST OF TRUE NORTH
MAGNETIC NORTH IN OCTOBER, 2003 IS 05°05'00" WEST OF TRUE NORTH
ANNUAL MAGNETIC CHANGE IS 8" WESTWARD

