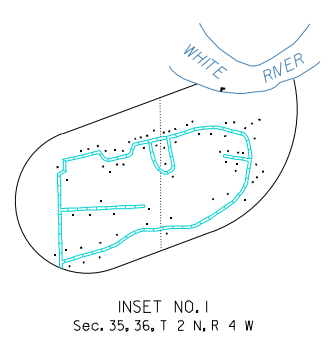
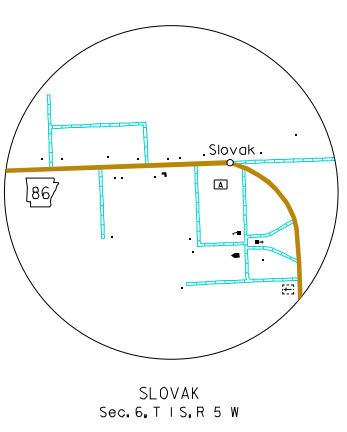
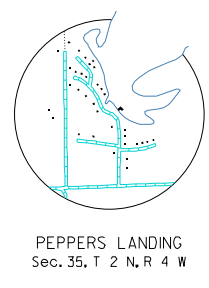
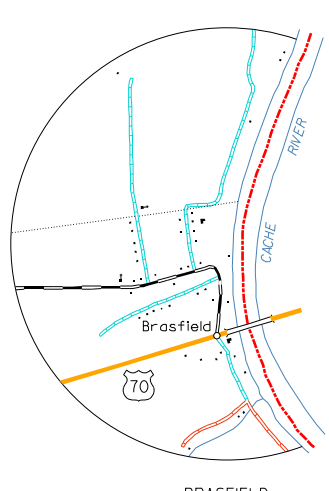


- LEGEND**
- COUNTY BOUNDARY
 - STATE OR COUNTY LINE INDETERMINATE
 - U.S. LAND TOWNSHIP LINE
 - SECTION LINE
 - PARK OR RESERVATION BOUNDARY
 - PAVED STATE OR U.S. HIGHWAY
 - DIVIDED HIGHWAY (PAVE OR MORE LINES IF CALLED)
 - INTERSTATE HIGHWAY
 - U.S. NUMBERED HIGHWAY
 - STATE HIGHWAY
 - PAVED LOCAL ROAD
 - GRAVEL LOCAL ROAD
 - GRADED & DRAINED LOCAL ROAD
 - UNIMPROVED LOCAL ROAD
 - INTERCHANGE
 - RAILROAD (INDICATE NUMBER OF TRACKS USED BY A SINGLE TRACK LINE)
 - RAILROAD STATION
 - GRADE CROSSING
 - OVERPASS
 - UNDERPASS
 - HIGHWAY BRIDGE (60 FEET OR MORE IN LENGTH)
 - PAVED FORD OR LOW WATER BRIDGE
 - LEVEE OR DIKE
 - LEVEE WITH ROAD
 - MILEAGE BETWEEN POINTS
 - LAKE, RESERVOIR OR POND
 - LAKE, RESERVOIR OR POND WITH DAM
 - MARSH OR SWAMP
 - WIDE RIVER OR STREAM
 - DOCK, PIER OR LANDING
 - NAVIGABLE STREAM
 - SMALL STREAM
 - DRAINAGE DITCH
 - CORPORATE LIMITS AND ROADS THROUGH TOWN
 - COUNTY SEAT
 - OTHER CITIES AND TOWNS
 - MUNICIPAL AIRPORT
 - PRIVATE AIRFIELD
 - FARM UNIT OR DWELLING
 - GROUP OF CLOSELY SPACED DWELLINGS (4+ NO FLOOR SHOWN)
 - CHURCH OR OTHER RELIGIOUS INSTITUTION
 - POST OFFICE + POST OFFICE AND BUSINESS
 - CEMETERY
 - CHURCH WITH CEMETERY ADJACENT
 - BUSINESS ESTABLISHMENT
 - GRAVEL PIT + QUARRY
 - TOWN OR COMMUNITY HALL
 - POWER SUBSTATION
 - FISH HATCHERY
 - OBSERVATION OR LOOKOUT TOWER
 - CAMP OR LODGE
 - GOLF COURSE OR COUNTRY CLUB
 - ATHLETIC FIELD OR AMUSEMENT PARK
 - SMALL PARK (UP STATE OF COUNTY, UP NATIONAL, UP STATE, OR WEST AREA)
 - WATER SUPPLY STANDPIPE OR TANK
 - SEWAGE DISPOSAL PLANT
 - ARMORY
 - PICNIC GROUND
 - SCENIC HIGHWAY

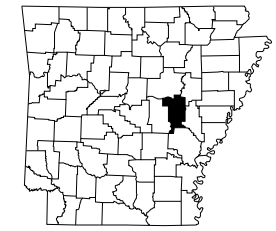


GENERAL HIGHWAY MAP
PRAIRIE COUNTY
ARKANSAS

PREPARED BY
ARKANSAS STATE HIGHWAY AND TRANSPORTATION DEPARTMENT
PLANNING AND RESEARCH DIVISION
IN COOPERATION WITH
U.S. DEPARTMENT OF TRANSPORTATION
FEDERAL HIGHWAY ADMINISTRATION
SCALE: 1:62,500
MILES
KILOMETERS

NOTES: Enlargements of all congested areas are five times map scale unless otherwise noted.
Individual maps are available for all active incorporated cities.
Area: 484.0 square miles
Population: 6,539 (2000 Census)
Map Issued: 8-09-00, replaces map issued 7-20-93
Field Inventory: 1978
Map revisions made from aerial photographs taken 1-8-99
Map compilation completed 7-07-00
County map produced using Computer Assisted Cartography.
Map Revised: 02-04-2008, deleted Highway 63, Section 15, 16.

Copies of this map are available at a nominal fee from the Arkansas State Highway and Transportation Department, P.O. Box 226-Little Rock, Ark. 72203



Polysaric Projection-North American Datum

