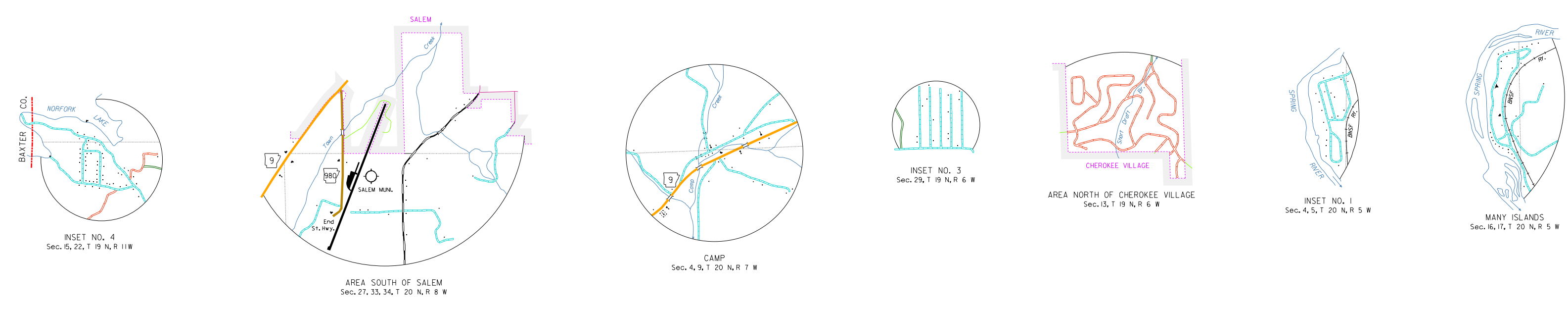
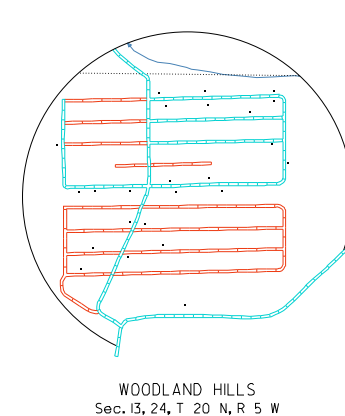


- LEGEND
- STATE BOUNDARY
  - COUNTY BOUNDARY
  - U.S. LAND TOWNSHIP LINE
  - SECTION LINE
  - PAVED STATE OR U.S. HIGHWAY
  - U.S. NUMBERED HIGHWAY
  - STATE HIGHWAY
  - PAVED LOCAL ROAD
  - GRAVEL LOCAL ROAD
  - GRADED & DRAINED LOCAL ROAD
  - UNIMPROVED LOCAL ROAD
  - RAILROAD
  - RAILROAD STATION
  - RAILROAD CROSSING
  - OVERPASS
  - UNDERPASS
  - HIGHWAY BRIDGE 100 FEET OR MORE IN LENGTH
  - PAVED FORD OR LOW WATER BRIDGE
  - MAILEAGE BETWEEN POINTS
  - LAKE, RESERVOIR OR POND
  - LAKE, RESERVOIR OR POND WITH DAM
  - WIDE RIVER OR STREAM
  - DOCK, PIER OR LANDING
  - SMALL STREAM
  - CORPORATE LIMITS AND ROADS THROUGH TOWN
  - COUNTY SEAT
  - OTHER CITIES AND TOWNS
  - MUNICIPAL AIRPORT
  - PRIVATE AIRFIELD
  - FARM UNIT OR DWELLING
  - GROUP OF CLOSELY SPACED DWELLINGS 1/4 IN. IF NO FIGURE SHOWN
  - APARTMENT COMPLEX OR MOTEL
  - CHURCH OR OTHER RELIGIOUS INSTITUTION
  - POST OFFICE & POST OFFICE AND BUSINESS
  - CEMETERY
  - CHURCH WITH CEMETERY ADJACENT
  - BUSINESS ESTABLISHMENT
  - GRAVEL PIT
  - QUARRY
  - TOWN OR COMMUNITY HALL
  - POWER PLANT
  - RADIO OR TELEVISION STATION AND CALL LETTERS
  - NURSING OR REST HOME
  - POWER SUBSTATION
  - TRAILER PARK
  - FISH HATCHERY
  - CAMP OR LODGE
  - GOLF COURSE OR COUNTRY CLUB
  - ATHLETIC FIELD OR AMUSEMENT PARK
  - WATER SUPPLY STANDPIPE OR TANK
  - SEWAGE DISPOSAL PLANT
  - AUTO SALVAGE YARD



GENERAL HIGHWAY MAP  
**FULTON COUNTY**  
ARKANSAS

PREPARED BY  
ARKANSAS STATE HIGHWAY AND TRANSPORTATION DEPARTMENT  
PLANNING AND RESEARCH DIVISION  
IN COOPERATION WITH  
U.S. DEPARTMENT OF TRANSPORTATION  
FEDERAL HIGHWAY ADMINISTRATION  
SCALE 1:62,500  
MILES  
KILOMETERS

NOTES: Enlargements of all congested areas are five times map scale unless otherwise noted.  
Individual maps are available for all active incorporated cities.  
Area: 650.4 square miles  
Population: 16,422 (2000 Census)  
Map issued 4-27-03; replaces map issued 10-28-96  
Field inventory 1979  
Map revisions made from aerial photographs taken 1-03-02  
Map compilation completed 4-11-03  
County map produced using Computer Assisted Cartography.

Copies of this map are available at a nominal fee from the Arkansas State Highway and Transportation Department, P.O. Box 226-Little Rock, Ark. 72203

