

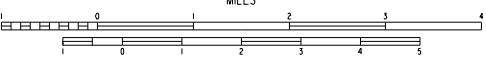
LEGEND

- STATE BOUNDARY
- COUNTY BOUNDARY
- STATE OR COUNTY LINE INDETERMINATE
- U.S. LAND TOWNSHIP LINE
- SECTION LINE
- PARK OR RESERVATION BOUNDARY
- PAVED STATE OR U.S. HIGHWAY
- DIVIDED HIGHWAY (SEE IN WHITE AND PINKISH, CARRIES FULL CONTROL OF ACCESS)
- U.S. NUMBERED HIGHWAY
- STATE HIGHWAY
- PAVED LOCAL ROAD
- GRAVEL LOCAL ROAD
- GRAVEL & TRUNKED LOCAL ROAD
- UNIMPROVED LOCAL ROAD
- RAILROAD (SEE NUMBER OF TRACKS USED BY A SMALL OPENING COMPANY)
- RAILROAD STATION
- GRADE CROSSING
- OVERPASS
- UNDERPASS
- HIGHWAY BRIDGE (SEE FEET OR MORE IN LENGTH)
- PAVED FORD OR LOW WATER BRIDGE
- LEVEE OR DIKE
- LEVEE WITH ROAD
- 0.6 MILEAGE BETWEEN PONTS
- LAKE, RESERVOIR OR POND
- MARSH OR SWAMP
- WIDE RIVER OR STREAM
- DOCK, PIER OR LANDING
- NAVIGABLE STREAM
- SMALL STREAM
- DRAINAGE DITCH
- CORPORATE LIMITS AND ROADS THROUGH TOWN
- COUNTY SEAT
- OTHER CITIES AND TOWNS
- MUNICIPAL AIRFIELD
- PRIVATE AIRFIELD
- FARM UNIT OR DWELLING
- GROUP OF CLOSELY SPACED DWELLINGS (SEE IN WHITE SHOWN)
- APARTMENT COMPLEX OR MOTEL
- CHURCH OR OTHER RELIGIOUS INSTITUTION
- SCHOOL
- POST OFFICE & POST OFFICE AND BUSINESS
- CEMETERY
- CHURCH WITH CEMETERY ADJACENT
- BUSINESS ESTABLISHMENT
- FACTORY OR INDUSTRIAL PLANT-COTTON GIN
- OIL TANK
- GRAVEL PIT
- QUARRY
- RADIO OR TELEVISION STATION AND CALL LETTERS
- A.H.T.D. GARAGE OR COUNTY GARAGE
- GAUGING OR PUMPING STATION
- POWER SUBSTATION
- GRAN ELEVATOR
- TRAILER PARK
- FISH HATCHERY
- PUMPING STATION, OIL OR GAS
- CAMP OR LODGE
- GOLF COURSE OR COUNTRY CLUB
- SMALL PARK (SEE STATE OR COUNTY, IN NATIONAL, IN PRIVATE, IN REST AREA)
- WATER SUPPLY STADIUM OR TANK
- SEWAGE DISPOSAL PLANT
- AUTO SALVAGE YARD
- PICNIC GROUND
- TOURIST INFORMATION CENTER
- TOURIST INFORMATION CENTER

NOTE: Enlargements of all congested areas are five times map scale unless otherwise noted.
Individual maps are available for all active incorporated cities.
Area: 644 Square Miles
Population: 41,171 2000 Census
Map issued 9-2-97, replaces map issued 8-12-86
Field Inventory: 1977
Map revisions made from aerial photographs taken 11-17-95
Map compilation completed 12-21-96
County map produced using Computer Assisted Cartography.
Map Revised 08-07-2007, Route change, Intersection of U.S. 65, Section 2 and U.S. 82, Section 14, 15M
Map Revised 11-09-2007, added U.S. 65, Section 21 South of Eudora, 14M

GENERAL HIGHWAY MAP
CHICOT COUNTY
ARKANSAS

PREPARED BY
ARKANSAS STATE HIGHWAY AND TRANSPORTATION DEPARTMENT
PLANNING AND RESEARCH DIVISION
IN COOPERATION WITH
U.S. DEPARTMENT OF TRANSPORTATION
FEDERAL HIGHWAY ADMINISTRATION
SCALE: 1:62,500



Copies of this map are available at a nominal fee from the Arkansas State Highway and Transportation Department, P.O. Box 226 Little Rock, Ark. 72203

